

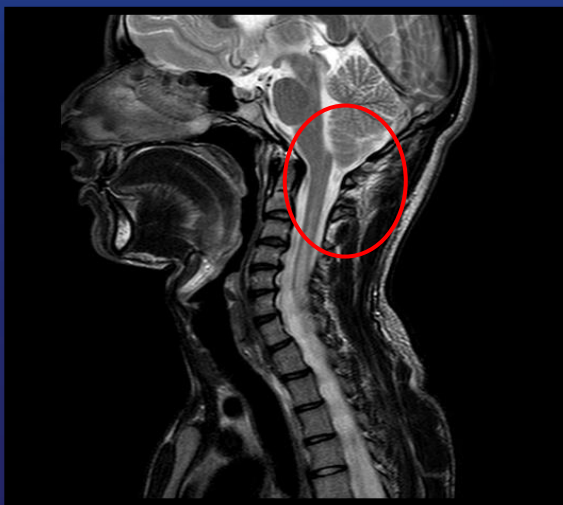


Case-I

ARNOLD CHIARI SYNDROME



USG



MRI





Case-II

DENTIGEROUS CYST 38
D/D AMELOBLASTOMA





Case-III



MALIGNANCY INVOLVING FLOOR
OF MOUTH





Case-IV



MALIGNANCY INVOLVING BODY
OF MANDIBLE

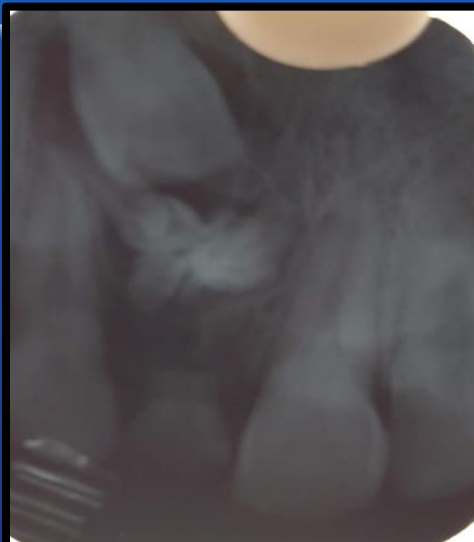




Case-V

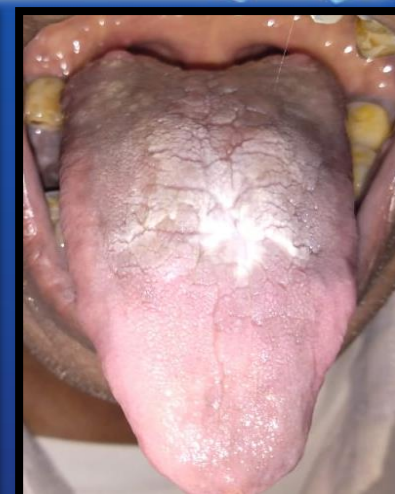
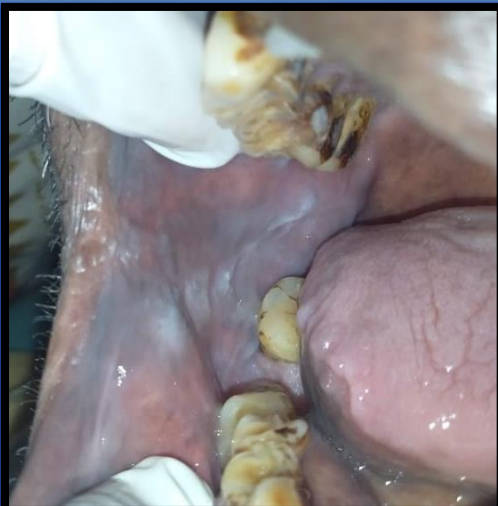


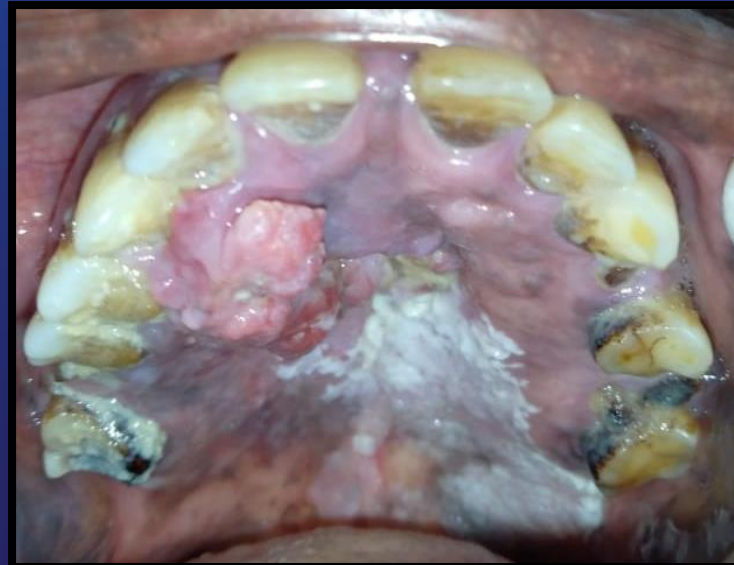
COMPOUND ODONTOMA





POTENTIALLY MALIGNANT DISORDERS







FACIAL PRESENTATION DURING LABOR





LYMPHANGIOMA





